



The Global Language of Business

# Goods Requirements Business Message Standard (BMS)

*Release 3.7, Ratified, Mar 2025*



## Document Summary

Document Item	Current Value
Document Name	Goods Requirements Business Message Standard (BMS)
Document Date	Mar 2025
Document Version	3.7
Document Issue	1
Document Status	Ratified

## Work Request Reference

Date of WR Submission to GSMP:	WR Submitter(s):	Refer to Work Request (WR) Number(s):
20-Aug- 2008	GS1 GO	08-000209
06-Sep-2006	Accenture	07-000320
11-May-2004	GUSI	04-000211
07-Feb-2014	GS1 Germany	14-000021
20-Mar-2014	GS1 Slovenia	14-000044
25-Jun-2014	GS1 GO	14-000110
12-Jul-2016	GS1 GO	16-000340
03-Oct-2018	GS1 GO	18-000319

## Business Requirements Document (BRAD) Reference

BRAD Title	BRAD Issue Date	BRAD Version
BRAD Upstream Standards – Demand & Supply Signals	01-Nov-2004	0.1.0

## Document Change History

Date of Change	Version	Changed By	Reason for Change	Summary of Change
12-Jan-2012	BMS 3.0 – Issue 1	Mark Van Eeghem	BMS Release 3.0	See summary of changes
01-May-2013	BMS 3.1 – Issue 1	Coen Janssen	BMS Release 3.1	See summary of changes
15-Sep-2014	BMS 3.2 – Issue 1	Ewa Iwicka	BMS Release 3.2	See summary of changes
01-Mar-2017	BMS 3.3 – Issue 1	Ewa Iwicka	BMS Release 3.3	See summary of changes
15-Oct-2018	BMS 3.4 – Issue 1	Ewa Iwicka	BMS Release 3.4	See summary of changes
04-Feb-2021	BMS 3.5 – Issue 1	Miklos Bolyky	BMS Release 3.5	See summary of changes

Date of Change	Version	Changed By	Reason for Change	Summary of Change
05-Jan-2022	BMS 3.5.1 – Issue 1	Miklos Bolyky	BMS Release 3.5.1	See summary of changes
01-Mar-2023	BMS 3.6 – Issue 1	Miklos Bolyky	BMS Release 3.6	See summary of changes
15-Mar-2025	BMS 3.7 – Issue 1	Miklos Bolyky	BMS Release 3.7	See summary of changes

## Disclaimer

GS1 seeks to minimise barriers to the adoption of its standards and guidelines by making the intellectual property required to implement them available, to the greatest extent possible, on a royalty-free basis, or when necessary, under a RAND licence. Such royalty-free and RAND licences are provided pursuant to the GS1 IP Policy (available here: <https://www.gs1.org/standards/ip>), which governs the work of work group participants who contribute to drafting standards and guidelines, including this document. In addition to licences, the GS1 IP Policy provides various benefits and obligations that apply to all implementers of GS1 standards and guidelines, and all implementations of GS1 standards are subject to those terms.

Nevertheless, please note the possibility that an implementation of one or more features of this standard or guideline may be the subject of a patent or other intellectual property right that is not covered by the licences granted pursuant to the IP Policy. In addition, the licences granted under the IP Policy do not include the IP rights or claims of third parties who were not participants in the corresponding standard development work group.

Accordingly, GS1 recommends that any person or organisation developing an implementation of this standard or guideline should determine whether any patents or other intellectual property may encompass such implementation, and whether a licence under a patent or other IP right is needed. The implementer should determine the potential need for licensing in view of the details of the specific implementation being designed in consultation with that party's patent counsel.

The official versions of all GS1 standards and guidelines are provided as PDF files on GS1's online reference directory (<https://ref.gs1.org>) (the "GS1 Reference"). Any other representations of standards or guidelines in any other format (e.g., web pages) are provided for convenience and descriptive purposes only, and in the event of a conflict, the GS1 Reference document shall govern.

THIS DOCUMENT IS PROVIDED "AS IS" WITH NO WARRANTIES WHATSOEVER, EXPRESS OR IMPLIED, INCLUDING ANY WARRANTY OF MERCHANTABILITY, NONINFRINGEMENT, FITNESS FOR PARTICULAR PURPOSE, ACCURACY OR COMPLETENESS, OR ANY WARRANTY OTHERWISE ARISING OUT OF THIS DOCUMENT. GS1 disclaims all liability for any damages arising from any use or misuse of this document, whether special, indirect, consequential, or compensatory damages, and including liability for infringement of any intellectual property rights, relating to use of information in or reliance upon this document.

GS1 makes no commitment to update the information contained herein, and retains the right to make changes to this document at any time, without notice. GS1® and the GS1 logo are registered trademarks of GS1 AISBL.

# Table of Contents

<b>1</b>	<b>Business Domain View .....</b>	<b>5</b>
1.1	Introduction .....	5
<b>2</b>	<b>Business Context .....</b>	<b>5</b>
<b>3</b>	<b>Business Transaction View .....</b>	<b>6</b>
3.1	Business Transaction – Net Requirements .....	6
3.2	Business Transaction - Consumption Forecast.....	7
<b>4</b>	<b>Business Information View .....</b>	<b>9</b>
4.1	Goods Requirements .....	9
4.2	Goods Requirements Line Item .....	11
4.3	Enumerations (message specific) .....	13
4.4	Code Lists .....	13
<b>5</b>	<b>Business Message Examples .....</b>	<b>14</b>
5.1	Example.....	14
<b>6</b>	<b>Implementation Considerations.....</b>	<b>16</b>
6.1	User Guide .....	16
6.2	Message Specific Considerations .....	16
<b>7</b>	<b>Summary of Changes .....</b>	<b>17</b>
7.1	BMS Release 3.1 .....	17
7.2	BMS Release 3.2 .....	17
7.3	BMS Release 3.3 .....	18
7.4	BMS Release 3.4 .....	19
7.5	BMS Release 3.5 .....	19
7.6	BMS Release 3.5.1 .....	19
7.7	BMS Release 3.6 .....	19
7.8	BMS Release 3.7 .....	19
<b>8</b>	<b>Appendices .....</b>	<b>19</b>
<b>9</b>	<b>Acknowledgements.....</b>	<b>19</b>
9.1	Work Group.....	19
9.2	Development Team Members.....	21

# 1 Business Domain View

## 1.1 Introduction

### Message Definition

Goods Requirements message allows the buyer to inform the seller about the requirement for given trade items and locations for specific time periods.

### Principles

Goods Requirements message may be used in traditional order driven scenarios and is definitely needed in supplier managed inventory scenarios, in combination with the Inventory Report.

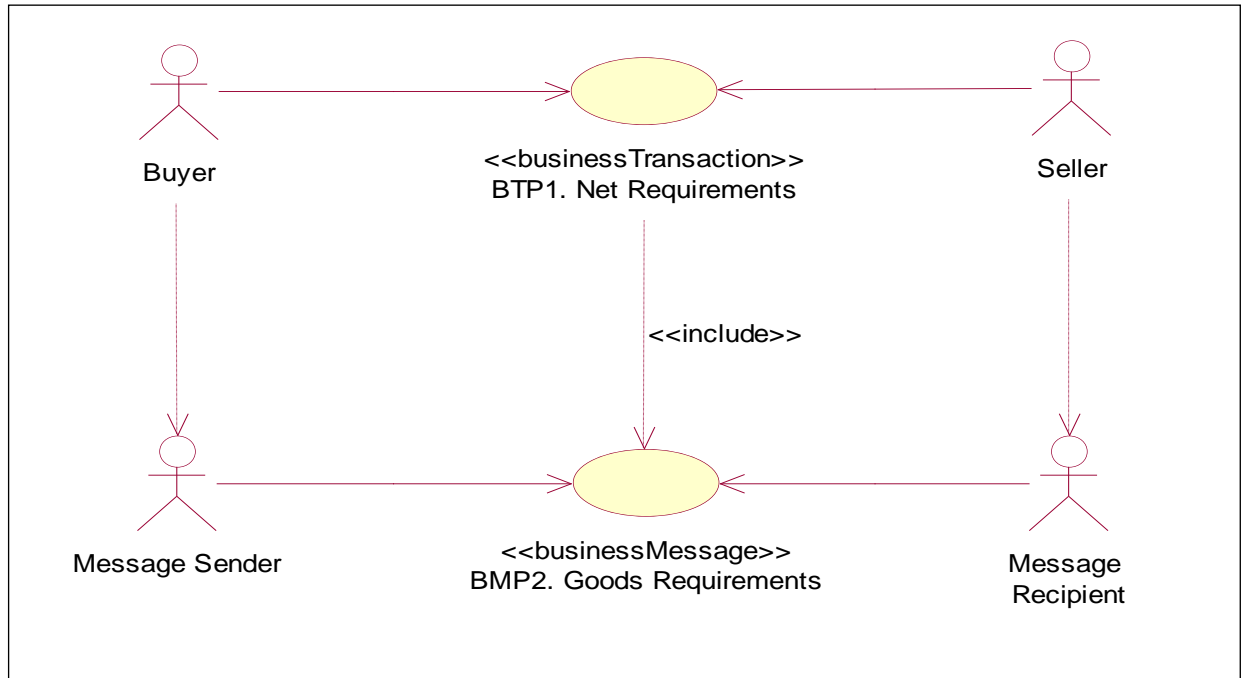
# 2 Business Context

Context Category	Value(s)
Industry	All
Geopolitical	All
Product	All
Process	Plan
Official Constraints	None
System Capabilities	GS1 System

## 3 Business Transaction View

### 3.1 Business Transaction – Net Requirements

#### Use Case Diagram



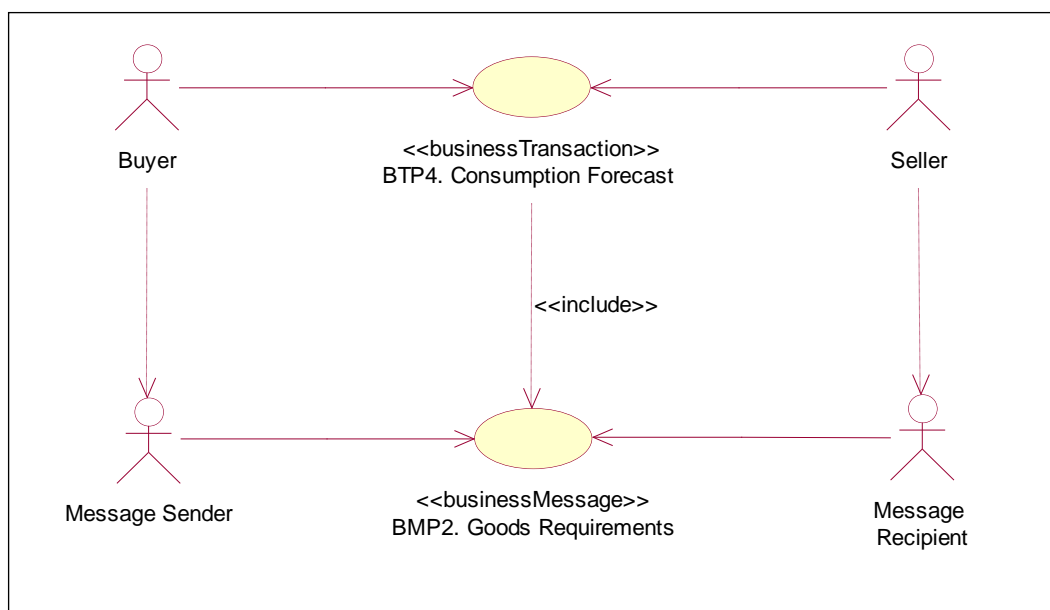
#### Use Case Description

Use Case ID	BTP1		
Use Case Name	Net Requirements		
Use Case Description	The buyer communicates his net requirements to the seller.		
Actors (Goal)	Buyer: To send the net requirements. Seller: To receive the net requirements.		
Performance Goals	Not Applicable		
Preconditions	Net Requirements: CALCULATED		
Post conditions	Net Requirements: COMMUNICATED		
Scenario	Begins when:		
	Buyer has calculated his net requirements.		
	Continues with:		
	Step #	Actor	Activity Step
		Buyer	Sends Goods Requirements message to the Seller.
		Seller	Receives Goods Requirements Message
	Ends when:		

Use Case ID	BTP1		
Alternative Scenario	<i>(any alternatives to the above scenario)</i>		
	Step #	Actor	Activity Step
			Not Applicable
Business Transaction Rules			
		For communicating the consumption forecast use the goodsRequirementsType with value NET_REQUIREMENTS	

## 3.2 Business Transaction - Consumption Forecast

### Use Case Diagram



### Use Case Description

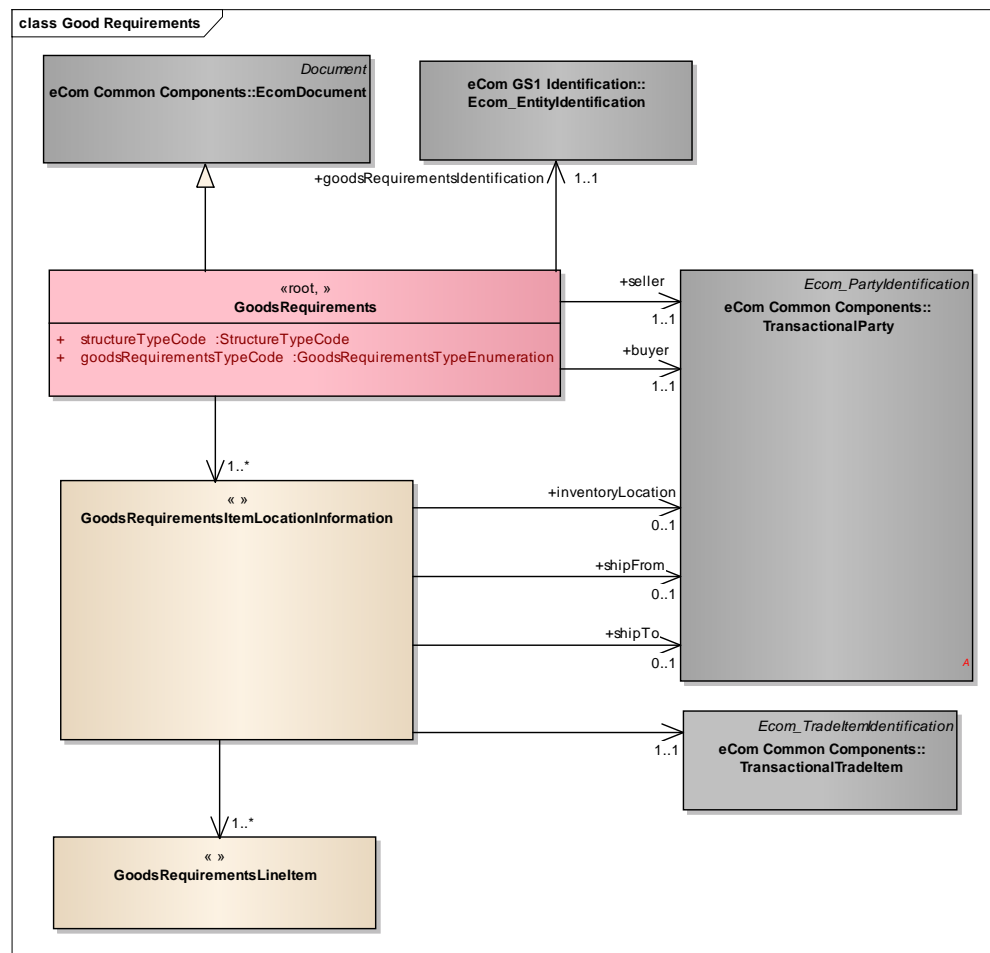
Use Case ID	BTP4		
Use Case Name	Consumption Forecast		
Use Case Description	The buyer communicates his forecasted consumption to the seller.		
Actors (Goal)	Buyer: To send the consumption forecast. Seller: To receive the consumption forecast.		
Performance Goals	Not Applicable		
Preconditions	Consumption Forecast: CALCULATED		
Post conditions	Consumption Forecast: COMMUNICATED		
Scenario	Begins when: Buyer has calculated his forecasted consumption. Continues with:		
	Step #	Actor	Activity Step
		Buyer	Sends Goods Requirements message to the Seller.
		Seller	Receives Goods Requirements Message
	Ends when:		
Alternative Scenario	<i>(any alternatives to the above scenario)</i>		
	Step #	Actor	Activity Step
			Not Applicable
Business Transaction Rules			
	1	For communicating the consumption forecast use the goodsRequirementsType with value GROSS_REQUIREMENTS	



## 4 Business Information View

### 4.1 Goods Requirements

#### Class diagram



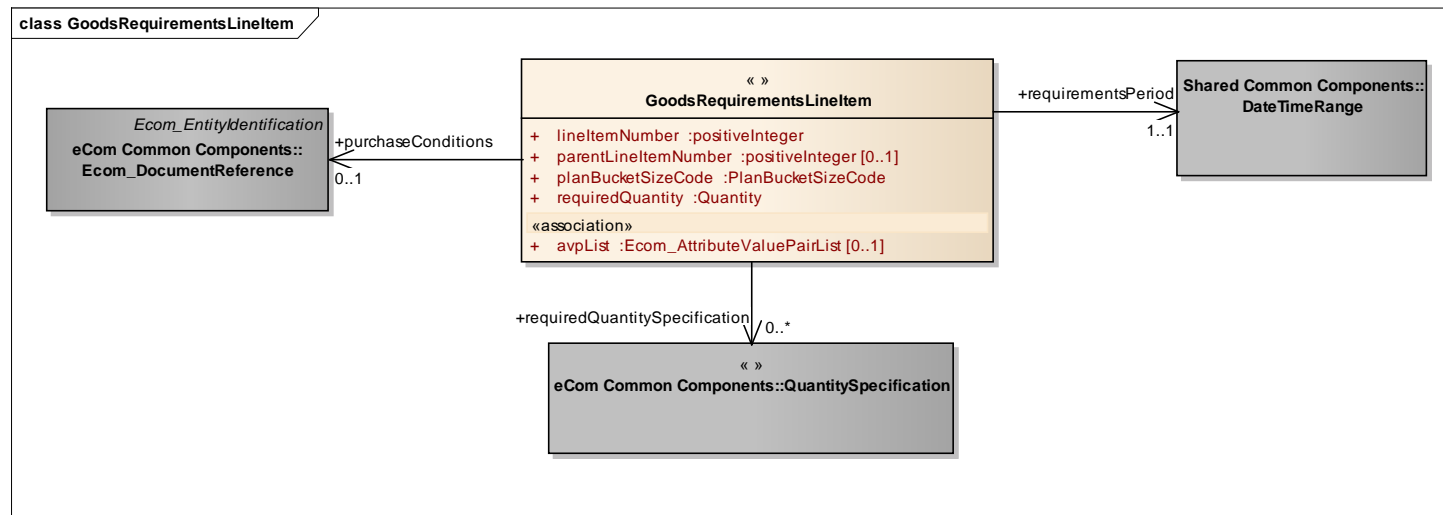
## Report

The content of the GoodsRequirements class, its structure and component definitions can be accessed in the GS1 Navigator: [Navigator link](#)

Content	Attribute/Role	Datatype / Secondary class	Multiplicity	Definition	Requirements
GoodsRequirements				Contains the Goods Requirements from the buyer to the seller for given trade items and locations for specific time periods.	
Association		GoodsRequirementsItemLocationInformation	1..*	Contains the Goods Requirements for given trade items and locations for specific time periods.	
Association	goodsRequirementsIdentification	Ecom_EntityIdentification	1..1	Contains the unique identifier of the business document.	WR 15-000314
Association	buyer	TransactionalParty	1..1	The buyer associated with the goods requirements for given trade items and locations for specific time periods.	
Association	seller	TransactionalParty	1..1	The seller associated with the goods requirements for given trade items and locations for specific time periods.	
Generalization		EcomDocument		Basic information about the content of the message including version number, creation date and time.	WR 14-000110
Attribute	goodsRequirementsTypeCode	GoodsRequirementsTypeEnumeration	1..1	Contains the type of Goods Requirements, gross or net.	
Attribute	structureTypeCode	StructureTypeCode	1..1	Contains the type of grouping and sequence of the business document.	
GoodsRequirementsItemLocationInformation				Contains the Goods Requirements for a given trade item and location for specific time periods.	
Association	shipTo	TransactionalParty	0..1	The ship to location associated with a goods requirement.	
Association	shipFrom	TransactionalParty	0..1	The ship from location associated with a goods requirement.	
Association		TransactionalTradeItem	1..1	The trade item associated with a goods requirement.	
Association	inventoryLocation	TransactionalParty	0..1	The location of inventory associated with a goods requirement.	
Association		GoodsRequirementsLineItem	1..*	Specifies the projected goods requirements for a given location / item.	

## 4.2 Goods Requirements Line Item

### Class Diagram



### Report

The content of the GoodsRequirementsLineItem class, its structure and component definitions can be accessed in the GS1 Navigator: [Navigator link](#)

Content	Attribute / Role	Datatype /Secondary class	Multiplicity	Definition	Requirements
GoodsRequirementsLineItem				Specifies the projected goods requirements for a given location / item.	
Association	purchaseConditions	Ecom_DocumentReference	0..1	Contains a reference to the commercial agreement under which the goods are supplied.	
Association	requiredQuantitySpecification	QuantitySpecification	0..*	Specifies the cumulative quantity already received for the specified time bucket.	



Content	Attribute / Role	Datatype /Secondary class	Multiplicity	Definition	Requirements
Association	requirementsPeriod	DateTimeRange	1..1	Contains the start and end dates and optionally start and end times of the requirements period.	
Attribute	lineItemNumber	positiveInteger	1..1	Provides the line number associated to the Goods Requirements Line Item.	
Attribute	planBucketSizeCode	PlanBucketSizeCode	1..1	Code specifying the duration of the requirements period.	renamed from timeBucketSizeType
Attribute	requiredQuantity	Quantity	1..1	The number of units required in the specified requirements period.	
Attribute	parentLineItemNumber	positiveInteger	0..1	The number of line item containing information about the parent of the current item. It allows establishing hierarchical link between the two items.	WR 14-000021 WR 14-000044
Attribute	avpList	Ecom_AttributeValuePairList	0..1	Temporary attributes introduced between minor versions.	WR 14-000110

### 4.3 Enumerations (message specific)

Not applicable

### 4.4 Code Lists

Class	Codelist	Navigator Link
GoodsRequirements	GoodsRequirementsTypeEnumeration	<a href="https://navigator.gs1.org/edi/codelist-details?&amp;name=GoodsRequirementsTypeEnumeration">https://navigator.gs1.org/edi/codelist-details?&amp;name=GoodsRequirementsTypeEnumeration</a>
GoodsRequirements	StructureTypeCode	<a href="https://navigator.gs1.org/edi/codelist-details?&amp;name=StructureTypeCode">https://navigator.gs1.org/edi/codelist-details?&amp;name=StructureTypeCode</a>
GoodsRequirementsLineItem	PlanBucketSizeCode	<a href="https://navigator.gs1.org/edi/codelist-details?&amp;name=PlanBucketSizeCode">https://navigator.gs1.org/edi/codelist-details?&amp;name=PlanBucketSizeCode</a>



**Note:** Refer to the GS1 Navigator (Navigator) for the code values.

## 5 Business Message Examples

### 5.1 Example

This is an example of a Goods Requirements message, communicating gross requirements. The message is sent out on 9<sup>th</sup> of February 2011 at 11 AM. The message is identified with the unique identifier GR205666.

#### Party Information

GS1 Global Location Number	Party Type
5412345000013	Buyer
4098765000010	Seller
5412345000174	Ship to X
5412345000228	Ship to Y

The gross requirements are sent by the Buyer (GLN 5412345000013) to the Seller (GLN 4098765000010). For informational purposes the Seller includes the name of his material requirements planner (Mr. Gilgamesh).

The gross requirements are for two delivery sites, X (Ship To 5412345000174) and Y (Ship To 5412345000228).

The gross requirements are for one item A (GTIN 40987650000223).

For the item A and delivery site X the gross requirements are:

- Week February 11-17: 1000 units, of which 500 units have already been received.
- Week February 18-25: 200 units.

The contract to be used for the requirements in week February 11-17 (2004000012) was issued by the business unit of the Seller (GLN 4098765000010). Within the contract line 23 refers to this item.

For the requirements in week February 18-25 no contract has been specified.

For item A and delivery site Y the gross requirements are:

- Week February 11-17: 300 units.
- Week February 18-25: 1200 units.

The contract used for the requirements in week February 11-17 (2004000012) is the same as for delivery site X.

For the requirements in week February 18-25 no contract has been specified.

#### Message Example

Attribute	Value
<b>GoodsRequirements</b>	
creationDateTime	2011-02-09 11.00
documentStatusCode	ORIGINAL
structureTypeCode	ITEM_BY_LOCATION
goodsRequirementsTypeCode	GROSS_REQUIREMENTS
<b>EntityIdentification (+goodsRequirementsIdentification)</b>	
entityIdentification	GR205666
<b>PartyIdentification (+contentOwner)</b>	
gln	5412345000013
<b>TransactionalParty (+seller)</b>	

Attribute	Value
gln	4098765000010
<b>TransactionalParty (+buyer)</b>	
gln	5412345000013
<b>Contact</b>	
personName	Gilgamesh
responsibility	goodsRequirementsPlanner
<b>GoodsRequirementsItemLocationInformation *1</b>	
<b>TransactionalParty (+shipTo)</b>	
gln	5412345000174
<b>TransactionalTradeItem</b>	
gtin	40987650000223
<b>GoodsRequirementsLineItem *1.1</b>	
lineItemNumber	1
planBucketSizeCode	WEEK
requiredQuantity	1000
<b>DateTimeRange (+requirementsPeriod)</b>	
beginDate	2011-02-11
endDate	2011-02-17
<b>DocumentReference (+purchaseConditions)</b>	
lineItemNumber	23
entityIdentification	PC356987
<b>PartyIdentification (+contentOwner)</b>	
gln	4098765000010
<b>QuantitySpecification (+requiredQuantitySpecification)</b>	
quantitySpecificationType	RECEIVED
specificQuantity (value, unitOfMeasure)	500
<b>GoodsRequirementsLineItem *1.2</b>	
lineItemNumber	2
planBucketSizeCode	WEEK
requiredQuantity	1200
<b>DateTimeRange (+requirementsPeriod)</b>	
beginDate	2011-02-18
endDate	2011-02-25
<b>GoodsRequirementsItemLocationInformation *2</b>	
<b>TransactionalParty (+shipTo)</b>	
gln	5412345000228
<b>TransactionalTradeItem</b>	
gtin	40987650000223
<b>GoodsRequirementsLineItem *2.1</b>	
lineItemNumber	1

Attribute	Value
planBucketSizeCode	WEEK
requiredQuantity	300
<b><i>DateTimeRange (+requirementsPeriod)</i></b>	
beginDate	2005-02-11
endDate	2005-02-17
<b><i>DocumentReference (+purchaseConditions)</i></b>	
lineItemNumber	23
entityIdentification	PC356987
<b><i>PartyIdentification (+contentOwner)</i></b>	
gln	4098765000010
<b>GoodsRequirementsLineItem *2.2</b>	
lineItemNumber	2
planBucketSizeCode	WEEK
requiredQuantity (value, unitOfMeasure)	1200
<b><i>DateTimeRange</i></b>	
beginDate	2011-02-18
endDate	2011-02-25

## 6 Implementation Considerations

### 6.1 User Guide

The Functional User Guide contains more information about the structure and content of the Goods Requirements message: [http://www.gs1.org/docs/ecom/xml/3/3.4/eCom-Trade\\_messages.html#GoodsRequirements](http://www.gs1.org/docs/ecom/xml/3/3.4/eCom-Trade_messages.html#GoodsRequirements)

### 6.2 Message Specific Considerations

Not Applicable



## 7 Summary of Changes

Any change in the GS1 standards is done based on the Work Request (WR) submitted by the GS1 User Companies or Member Organisations. All Work Requests are documented in the Work Request system available on the GS1 website: <http://wr.gs1.org>. The system is accessible to registered users. New visitors need to register first, to be able to access it. WRs can be searched by the number referenced in tables below, see: Search Work Requests. The number starts with the two last digits of the year when it was submitted, followed by the consecutive number within that year.



**Note:** WRs submitted earlier than February 2012 should be searched in Old Change Requests.

Change	Associated CR Number
For BMS Release 3.0.0 Updated to reflect changes in modelling methodology.	Not Applicable
For Issue Resolution: <ul style="list-style-type: none"> <li>Fixed typo in title section 11: "Principals" -&gt; "Principles"</li> <li>Updated business example and test data for the changes in sequencing and issue resolution.</li> </ul>	Not Applicable
For Peer Review: <ul style="list-style-type: none"> <li>Changed font in alternate scenario in use case section 4.2 from Times New Roman to Arial</li> <li>Changed font in alternate scenario in use case section 4.4 from Times New Roman to Arial</li> <li>Changed alignment in the business rule in section 4.2 to left.</li> <li>Changed alignment in the business rule in section 4.4 to left.</li> </ul>	Not Applicable
For Publication <ul style="list-style-type: none"> <li>Added Copyright R in GS1 Logo</li> <li>Changed Status to Approved</li> <li>Removed year reference in footer copyright statement</li> <li>Replaced Section 10 with updated AG Principles</li> </ul>	Not Applicable

### 7.1 BMS Release 3.1

No work requests. Indirect changes due to upgrade to new Shared and eCom Common libraries.

### 7.2 BMS Release 3.2

Change	Associated WR
<p>Added Attribute Value Pair at the root, line item and sub line item levels</p> <pre> class GoodsRequirements - maintenance view     «root, »     GoodsRequirements     + structureTypeCode: StructureTypeCode     + goodsRequirementsTypeCode: GoodsRequirementsTypeEnumeration     maintenance     Change: (Verified) 3.2 changed generalisation from Document to eComDocument class to include AVP (WR 14-110) </pre>	<b>14-000110</b>

Change	Associated WR
<ul style="list-style-type: none"> <li>Added Attribute Value Pair at the root, line item and sub line item levels (WR 14-110)</li> <li>Added a reference to parent line number to all LineItem classes, to support hierarchical items. (WRs 14-021 &amp; 14-044)</li> </ul> <div> class GoodsRequirementsLineItem - maintenance view <div> <div>« »</div> <div>GoodsRequirementsLineItem</div> <div> + lineItemNumber: positiveInteger  + planBucketSizeCode: PlanBucketSizeCode  + requiredQuantity: Quantity  + parentLineItemNumber: positiveInteger [0..1]  «association»  + avpList: Ecom_AttributeValuePairList [0..1] </div> <div> maintenance  Change: (Verified) 3.2 added +avpList (WR 14-110)  Change: (Verified) 3.2 added +parentLineItemNumber (WR 14-021 &amp; 14-044) </div> </div> </div>	<b>14-000021</b> <b>14-000044</b> <b>14-000110</b>

### 7.3 BMS Release 3.3

Change	Associated WR
<div>Created Ecom_EntityIdentification class and changed association from the previous EntityIdentification</div> <div><div>class GoodsRequirements - maintenance view</div><div><div><div><div>eCom GS1 Identification:: Ecom_EntityIdentification</div><div><i>maintenance</i></div><div>Change: (New) 3.3 New class (WR 15-314)</div></div><div><div>+goodsRequirementsIdentification</div><div>1..1</div></div></div><div><div>«root, »</div><div>GoodsRequirements</div><div>+ structureTypeCode :StructureTypeCode</div><div>+ goodsRequirementsTypeCode :GoodsRequirementsTypeEnumeration</div><div><i>maintenance</i></div><div>Change: (Complete) 3.2 changed generalisation from Document to eComDocument class to include AVP (WR 14-110)</div><div>Change: (New) 3.3 changed association from EntityIdentification to Ecom_EntityIdentification (WR 15-314)</div></div></div></div>	<div>15-000314</div> <div>Make GS1 identification keys optional in GS1 EDI XML</div>
<div>Created Ecom_DocumentReference class and changed association from the previous DocumentReference</div> <div><div>class GoodsRequirementsLineItem - maintenance view</div><div><div><div><div>eCom Common Components:Ecom_EntityIdentification</div><div><i>maintenance</i></div><div>Change: (New) 3.3 added +referencedDocumentUri (WR 16-261)</div><div>Change: (New) 3.3 New class (WR 15-314)</div></div><div><div>+purchaseConditions</div><div>0..1</div></div></div><div><div>« »</div><div>GoodsRequirementsLineItem</div><div>+ lineItemNumber :positiveInteger</div><div>+ parentLineItemNumber :positiveInteger [0..1]</div><div>+ planBucketSizeCode :PlanBucketSizeCode</div><div>+ requiredQuantity :Quantity</div><div><i>association</i></div><div>+ avpList :Ecom_AttributeValuePairList [0..1]</div><div><i>maintenance</i></div><div>Change: (Complete) 3.2 added +avpList (WR 14-110)</div><div>Change: (Complete) 3.2 added +parentLineItemNumber (WR 14-021 &amp; 14-044)</div><div>Change: (New) 3.3 changed association named +purchaseConditions from DocumentReference to Ecom_DocumentReference (WR 15-314)</div></div></div></div>	<div>15-000314</div> <div>Make GS1 identification keys optional in GS1 EDI XML</div>

## 7.4 BMS Release 3.4

No work requests. Indirect changes due to upgrade to new Shared and eCom Common libraries.

## 7.5 BMS Release 3.5

No work requests. Indirect changes due to upgrade to new Shared and eCom Common libraries.

## 7.6 BMS Release 3.5.1

No work requests. Indirect changes due to upgrade to new Shared and eCom Common libraries.

## 7.7 BMS Release 3.6

No work requests. Indirect changes due to upgrade to new Shared and eCom Common libraries.

## 7.8 BMS Release 3.7

No work requests. Indirect changes due to upgrade to new Shared and eCom Common libraries.

# 8 Appendices

Not Applicable

# 9 Acknowledgements

## 9.1 Work Group

Function	Name	Company / organisation
Co-chair	Rossner (Pottier), Natascha	GS1 France
Co-chair	Schmidt, Tom Eric	August Storck KG
Member	Bemrose, Jonathan	R&R Ice Cream
Member	Bodemer, Petra	dm-drogerie markt GmbH + Co. KG
Member	Boikanyo, Rebone	GS1 South Africa / Consumer Goods Council of South Africa
Member	Canada, ON	M3B 3L1
Member	Carlson, Jim	General Mills, Inc.
Member	Chresta, Richard	GS1 Switzerland
Member	Cook, Don	Wal-Mart Stores, Inc.
Member	Cox, Marc	Philips Electronics N.V.
Member	Darnell, David	Systrends
Member	De Flou, Nele	GS1 Belgium & Luxembourg
Member	Dicks, Arne	GS1 Germany
Member	Duvinger, Karina	GS1 Sweden
Member	Foerderer, Klaus	GS1 Germany
Member	Gathmann, Stefan	GS1 Ireland
Member	Grangard, Anders	GS1 Global Office
Member	Harpell, Eileen	GS1 Community Room Staff

Function	Name	Company / organisation
Member	Hand, Phil	JDA Software
Member	Herregodts, Kurt	GS1 Belgium & Luxembourg
Member	Kempkes, Fred	Unilever N.V.
Member	Kernan, Brendan	GS1 Ireland
Member	Kidd, Robin	Nestle
Member	Krid, Anne-Claire	GS1 France
Member	Lanoue, Tom	General Mills, Inc.
Member	Laur, Rita	GS1 Canada
Member	Lenman, Mia	GS1 Sweden
Member	Lerch, Hanjoerg	METRO Group
Member	Moberg, Dale	Axway
Member	Montes de Oca, Alejandra	GS1 Mexico
Member	Ng, Ella	GS1 Australia
Member	Peelen, Esther	GS1 Netherlands
Member	Pelekies, Andreas	GS1 Germany
Member	Perrier, Patricia	GS1 France
Member	Przybilla, Christian	GS1 Germany
Member	Pujol, Xavier	GS1 Spain
Member	Racek, Greg	Wal-Mart Stores, Inc.
Member	Repetto, Mirko	GS1 Italy
Member	Robba, Steven	1WorldSync Holdings, Inc.
Member	Rosell, Pere	GS1 Spain
Member	Rosenberg, Steven	GS1 US
Member	Schmid, Sue	GS1 Australia
Member	Schneider, Christian	GS1 Switzerland
Member	Sehorz, Eugen	GS1 Austria
Member	Sharma, Vishal	General Mills, Inc.
Member	Shimazaki, Ayako	GS1 Japan
Member	Sion, Emilie	GS1 France
Member	Souza, Nadia	GS1 Brasil
Member	Strand, Roman	GS1 Germany
Member	Tan, Milton	GS1 Malaysia
Member	Tompsett, Simon	Waitrose
Member	Trelle, Ute	1WorldSync Holdings, Inc.
Member	Tse, Steve	GS1 Hong Kong
Member	Tyson, Betty	Knouse Foods Cooperative, Inc
Member	Van den Bergh, Senne	GS1 Belgium & Luxembourg
Member	Van der Eijk, Pim	OASIS - Sonnenglanz Consulting BV
Member	Veldhuis, Saskia	Procter & Gamble Co.
Member	Welch, Shan	GS1 UK
Member	Westerkamp, Jan	GS1 Netherlands

Function	Name	Company / organisation
Member	Wilson, Mary	GS1 US
Member	Windsperger, Bekki	Best Buy Co., Inc.
Member	Yang, Shaopeng	GS1 China
Member	Yusdiar, Dani	GS1 Indonesia
Member	Zwanziger, Greg	SUPERVALU

## 9.2 Development Team Members

Function	Name	Organisation
GSMP Process Lead	David Buckley	GS1 Global Office
Technical Development Lead	Miklos Bolyky	GS1 Global Office
Peer Review	Mark Van Eeghem	GS1 Global Office